

# Tuition Fee

1. Student Education status Services Fee (Tuition Fee for maintaining)	
1.1 First semester	6,300 baht
1.2 Second semester	5,600 baht
2. Health Insurance (Additional Fee for Non-Thai students)	3,500 baht/year
3. Thai Program	
3.1 Graduate Tuition Fee	1,800 baht/credit
3.2 Thesis Registration Fee <b>Master's Thesis Registration Fee</b> The thesis registration fee can be paid in two equal installments, at the first semester and the second semester of thesis registration.	18,000 baht/thesis
3.3 Research Supplies Fee (pay in the first semester of thesis Registration Fee) <b>Master's degree Program</b> For students who have not received a scholarship or have received a scholarship that only covers part of the tuition fee. The Director of the program and the Faculty of Graduate Studies may waive or exempt the research supplies fee.	150,000 baht
4. International Program	
4.1 Graduate Tuition Fee For students who have not received a scholarship or have received a scholarship that only covers part of the tuition fee. The Director of program and the Faculty of Graduate Studies may give these students partial support or waive the graduate tuition fee. The amount of this support cannot be less than 1,800 baht/credit.	9,000 baht/credit
4.2 Thesis Registration Fee <b>Master's Thesis Registration Fee (Plan A2)</b> <b>Doctoral Thesis Registration Fee 36 credits</b> <b>Doctoral Thesis Registration Fee 48 credits</b>	18,000 baht/thesis 54,000 baht/thesis 72,000 baht/thesis
4.3 Research Supplies Fee (pay in the first semester of the thesis registration) <b>Master degree Program</b> <b>Doctoral degree Program</b> For students who have not received a scholarship or have received a scholarship that only covers part of the tuition fee. The Director of the program and the Faculty of Graduate Studies may waive or exempt the research supplies fee.	150,000 baht 300,000 baht
4.4 Qualifying Examination Fee for Doctoral degree Program	4,200 baht/time



## Scholarship & Financial Support

- The 60<sup>th</sup> Year Supreme Reign of His Majesty King Bhumibol Adulyadej
- Royal Golden Jubilee Funds for ASEAN
- Partial scholarship and financial supports from Faculty of Graduate Studies and Faculty of Physical Therapy

Further info see [www.grad.mahidol.ac.th/en/scholarships](http://www.grad.mahidol.ac.th/en/scholarships) toward research based internation



## Contact person

Dr. Komsak Sinsurin, Program Director  
 Email: [komsak.sin@mahidol.edu](mailto:komsak.sin@mahidol.edu)  
 Phone : 66-2441-5450 Fax : 66-2441-5454  
[www.pt.mahidol.ac.th](http://www.pt.mahidol.ac.th)    [www.grad.mahidol.ac.th/en](http://www.grad.mahidol.ac.th/en)



"We bring internationalization to Ph.D. PTMU"

## The Doctor of Philosophy Program in Physical Therapy (International Program)

Faculty of Physical Therapy,  
 Mahidol University, Thailand

- The first international program (Physical Therapy) in the South East Asia
- Expertise in various areas of physical therapy and movement science e.g. manipulation, neurology, padiatrics, biomechanics, ergonomics, motor control and learning
- Well equipped with research instruments.



# About Our Program

The Doctor of Philosophy Program in Physical Therapy aims to produce scholars who are able to develop new knowledge and effectively develop their researches for benefits of public health and PT profession.

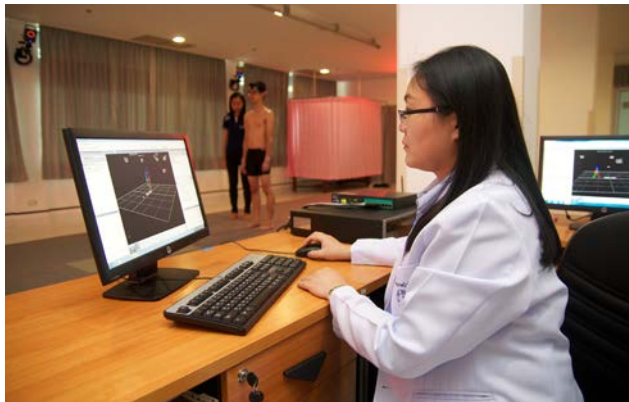
The program is determined to be internationally recognized, particularly within Asian region. We invited worldwide PT related professors to collaborate with us as co-advisors. Co-tutelle activity will be optional for developing our PhD candidates toward research based internationalization.

Our program will support all PhD students to completely attain the expected learning outcomes as follows

- Integrate contemporary knowledge to develop conceptual framework in physical therapy
- Conduct original research to create novel knowledge or innovation in the physical therapy profession
- Effectively perform academic presentations in international conferences
- Develop competent for leadership potential in research and profession
- Show a sense of responsibility to own or teams works in a productive and effective manner
- Identify moral and ethical problems and explain the solution in academic and clinical research

## What you will learn and experience?

Our Program has provided course based learning as well as varieties of research environment that will develop you toward high competency in research and prepare you for 21<sup>st</sup> century skills focusing on leadership and teamwork.



# Courses

## Courses for fulfilling your research and academic competency

### (Required for B.Sc. graduates only)

- Advanced Biomechanics of Human Movements
- Advanced Motor Control and Learning
- Advanced Research Methodology in Health Sciences
- Biostatistics
- Research Practicum

### (Required for all PhD students)

- Measurement and Evaluation for Physical Therapist
- Advanced Statistics in Health Sciences
- Contemporary Topics in Movement Science and Physical Therapy
- Physical Therapy Seminar
- Selected Topics



# Research Areas

- Biomechanics and Sports (BaS)
- Cardiovascular, Pulmonary, and Lifestyle Modification
- Functional and Disability Questionnaire
- Motor Control and Neural Plasticity Laboratories (MCNL)
- Pediatric Physical Therapy
- Community Physical Therapy Research
- Ergonomic and Physical Activity Research
- Musculoskeletal Physical Therapy Research
- Geriatric Physical Therapy Research



## Faculty of Physical Therapy, Mahidol University

999 Phuttamonthon 4 Road, Salaya, Nakhon Pathom 73170 Thailand

Phone : 66-2441-5450 Fax : 66-2441-5454

[www.pt.mahidol.ac.th](http://www.pt.mahidol.ac.th)